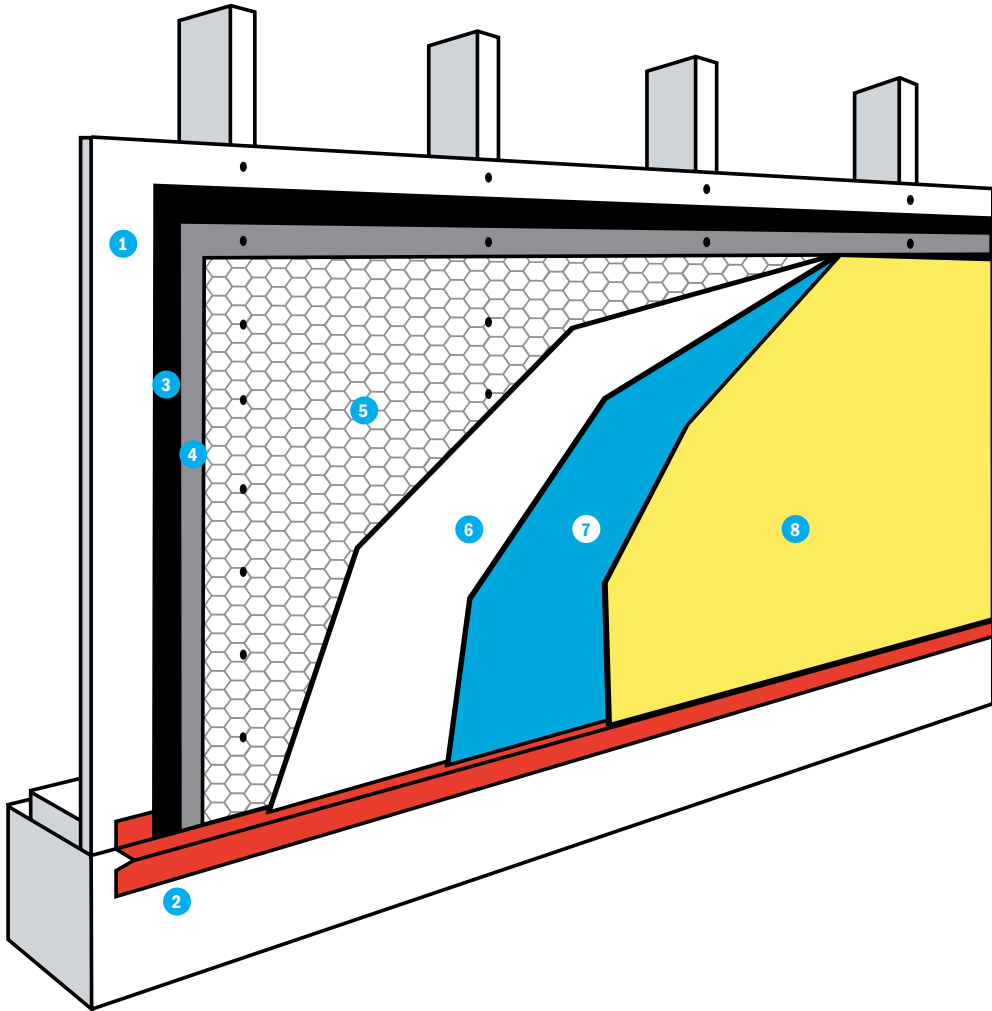




Stucco

STUCCO

STUCCO APPLICATION



1. **WOOD SHEATHING**
2. **FOUNDATION WEEP SCREED**
3. **FIRST LAYER OF BUILDING PAPER**
4. **SECOND LAYER OF BUILDING PAPER**
5. **REINFORCEMENT**
6. **SCRATCH COAT**
7. **BROWN COAT**
8. **COLOR COAT**



ROLLED POLY - CLEAR

SKU	DESCRIPTION	QUANTITY	PALLET DEPOSIT
020231	12' x 400' .7 MIL ROLL	72 ROLLS/PALLET	NONE
020233	9' x 400' 1 MIL ROLL	56 ROLLS/PALLET	NONE
020239	12' x 400' 1 MIL ROLL	49 ROLLS/PALLET	NONE
020244	4' 2" x 200' 2 MIL ROLL	120 ROLLS/PALLET	NONE
020245	8' 4" x 200' 2 MIL ROLL	56 ROLLS/PALLET	NONE
020251	12' x 200' 2 MIL ROLL	49 ROLLS/PALLET	NONE

• TYPICALLY USED AS PROTECTIVE COVERING OVER WINDOWS AND DOORS.

FOR A COMPLETE LIST OF ALL POLY, SEE THE **POLY AND PACKAGING** SECTION.

STUCCO

LOW RESIDUE TAPE

SKU	DESCRIPTION	QUANTITY	PALLET DEPOSIT
020667	2" x 60 YD. SHURTAPE #622	24 ROLLS/CASE	NONE
020887	2" x 60 YD. POLY VINYL TAPE	24 ROLLS/CASE	NONE

- **HIGH TACK/LOW RESIDUE**
- **IDEAL FOR PLASTERING OR STUCCO APPLICATIONS**
- **STICKS TO ALMOST ANY SURFACE – METAL, VINYL, WOOD, OR PLASTIC**
- **HEAT AND UV RESISTANT**
- **SUITABLE FOR INDOOR AND OUTDOOR USE**
- **DOES NOT LEAVE RESIDUE WHEN REMOVED**



TAMKO MOISTURE WRAP

SKU	DESCRIPTION	SIZE	QUANTITY	PALLET DEPOSIT
020653	MOISTURE WRAP	6" x 75' ROLL 40 MIL	6 ROLLS/CASE	NONE
020654	MOISTURE WRAP	9" x 75' ROLL 40 MIL	4 ROLLS/CASE	NONE
020655	MOISTURE WRAP	12" x 75' ROLL 40 MIL	3 ROLLS/CASE	NONE
020656	MOISTURE WRAP	18" x 75' ROLL 40 MIL	2 ROLLS/CASE	NONE
020658	MOISTURE WRAP	36" x 75' ROLL 40 MIL	1 ROLL/CASE	NONE

- **TAMKO MOISTURE WRAP IS A 40-MIL, SELF-ADHESIVE, RUBBERIZED MEMBRANE**
- **USE AS AN ABOVE GRADE MOISTURE/AIR BARRIER**
- **SUITABLE FOR WINDOW AND DOOR PERIMETERS**
- **SUITABLE FOR APPLICATION TO CONCRETE, BLOCK, EXTERIOR GYPSUM SHEATHING AND WOOD SURFACES**
- **MEETS ASTM D-1970 (FOR PLIABILITY), D-412, E-96, D-903, E-154, AND D-570**



FOR MORE INFORMATION SEE www.tamko.com/ProductDisplayPage/tabid/53/ControlType/productDisplay/itemid/1573/Default.aspx

KRAFT FLASHING

SKU	DESCRIPTION	SIZE	QUANTITY	PALLET DEPOSIT
020624	KRAFT FLASHING	6" x 150" ROLL	12 ROLLS/CASE	NONE
020630	KRAFT FLASHING	6" x 300" ROLL	6 ROLLS/CASE	NONE

- **A MOISTURE BARRIER FOR USE AROUND WINDOWS AND DOORS**
- **MEETS FEDERAL SPECIFICATION UU-B790A**
- **MEETS UBS 17-1**



ORDER NOW! 1-800-325-6851

STUCCO

ASPHALT SATURATED KRAFT PAPER ACTS AS A WEATHER RESISTANT BARRIER, OR MOISTURE BARRIER. IT IS DESIGNED FOR INSTALLATION BEHIND STUCCO, AND OTHER EXTERIOR WALL CLADDINGS AS A "SECONDARY WEATHER BARRIER". 60 MINUTE PAPER REFERS TO THE LENGTH OF TIME IT WOULD TAKE WATER TO SOAK THROUGH THE PAPER. REGULAR KRAFT PAPER MEETS THE STANDARDS FOR 30 MINUTE PAPER.

BLACK KRAFT PAPER (GRADE "D")

SKU	DESCRIPTION	SIZE	QUANTITY	PALLET DEPOSIT
020553	KRAFT PAPER 324	40" x 98 LINEAL FT. - 324 SQ. FT. ROLL	144 ROLLS/PALLET	NONE
020903	KRAFT PAPER 2-PLY	40" x 49 LINEAL FT. - 162 SQ. FT. ROLL	144 ROLLS/PALLET	NONE
020573	KRAFT PAPER 60 MIN.	40" x 72 LINEAL FT. - 240 SQ. FT. ROLL	144 ROLLS/PALLET	NONE

- MEETS ASTM E-96-03, D-779-03, AND D-828

SILSCREED

SKU	DESCRIPTION	QUANTITY	PALLET DEPOSIT
080581	ECONOMY 4" x 10' SILSCREED 7/8" GROUND	10 PCS./BNDL.	NONE
080593	5.5" x 10' SILSCREED 7/8" GROUND	10 PCS./BNDL.	NONE

- NAILS TO SILL PLATE TO PROVIDE A STRAIGHT LINE
- ACTS AS A WEEP TO ALLOW MOISTURE TO DRAIN FROM THE STUCCO
- 5.5" SILL SCREED IS COMMONLY REFERRED TO AS FHA SCREED BECAUSE IT MEETS FHA REQUIREMENTS
- 5.5" MEETS ASTM A-653, A-924 G60 (COATING)
- 5.5" CONFORMS TO CHAPTER 25 OF THE 1997 UBC, 2001 CBC, AND 2003 IBC

CORNERITE

SKU	DESCRIPTION	QUANTITY	PALLET DEPOSIT
080487	2" x 2" x 4' CORNERITE	125 PCS./CASE	NONE

- FINISHED EDGE CORNER LATH USED TO REINFORCE INSIDE CORNERS
- CAN BE APPLIED WITH EITHER NAILS OR SCREWS
- MEETS ASTM C-1063

N66 CASING (MIL-COR)

SKU	DESCRIPTION	QUANTITY	PALLET DEPOSIT
080414	3/8" x 10' N66 CASING	30 PCS./CASE	NONE
080421	1/2" x 10' N66 CASING	30 PCS./CASE	NONE
080433	3/4" x 10' N66 CASING	30 PCS./CASE	NONE
080439	7/8" x 8' N66 CASING	30 PCS./CASE	NONE
080445	7/8" x 10' N66 CASING	30 PCS./CASE	NONE

- GALVANIZED STEEL CASING USED TO TERMINATE STUCCO OR PLASTER IN A CLEAN, PROFESSIONAL EDGE AROUND DOORS AND WINDOWS
- MEETS ASTM C-1063

STUCCO

X66 EXPANDED CASING

SKU	DESCRIPTION	QUANTITY	PALLET DEPOSIT
080481	7/8" x 10' X66 EXPANDED	30 PCS./CASE	NONE

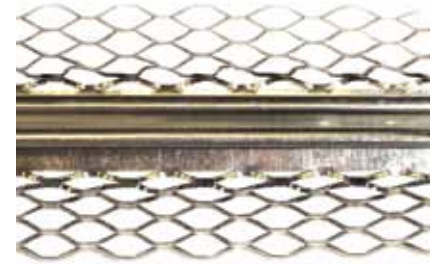
- GALVANIZED STEEL CASING USED TO TERMINATE STUCCO IN A CLEAN, PROFESSIONAL EDGE AROUND DOORS AND WINDOWS
- MEETS ASTM C-1063



CONTROL JOINT WITH TAPE

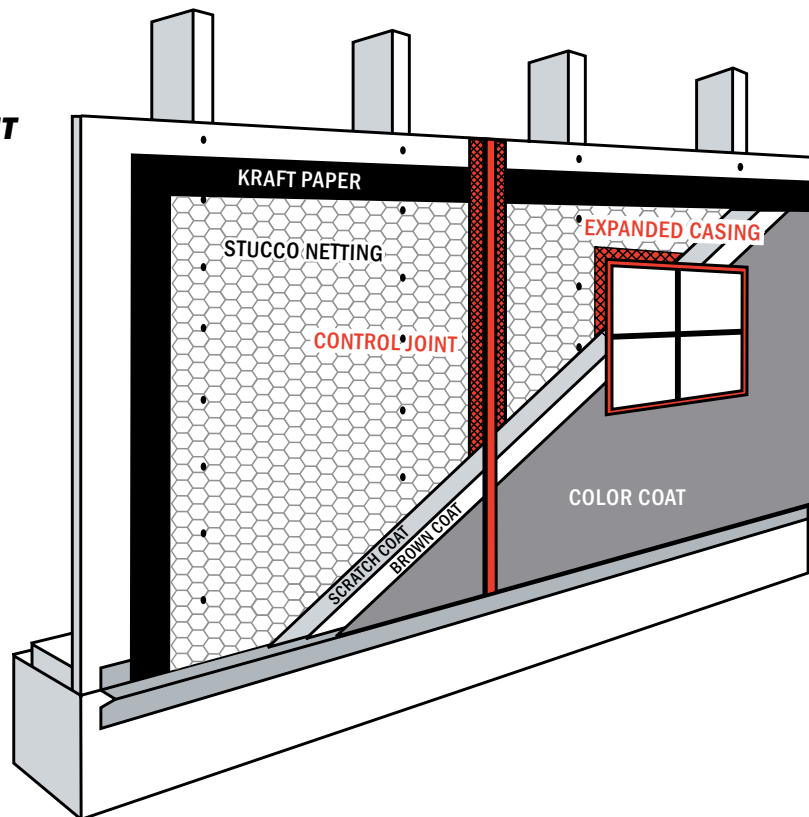
SKU	DESCRIPTION	QUANTITY	PALLET DEPOSIT
080563	#XJ15 CONTROL JOINT - 1/2" x 10'	24 PCS./BNDL.	NONE
080575	#XJ15 CONTROL JOINT - 7/8" x 10'	24 PCS./BNDL.	NONE

- CONTROL JOINT IS USED TO RELIEVE EXPANSION STRESS IN LARGE PLASTER AND STUCCO COVERED AREAS
- GALVANIZED TO PREVENT RUST AND CORROSION
- AFTER THE STUCCO JOB IS COMPLETE, REMOVE TAPE TO REVEAL CLEAN EDGE
- MEETS ASTM C-1063

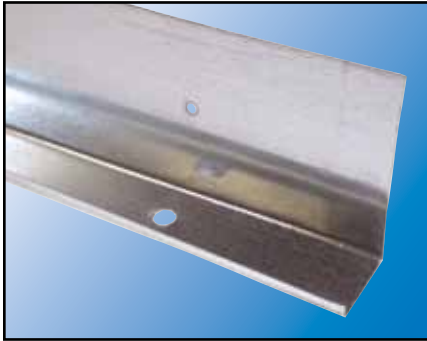


CONTROL JOINTS PREVENT CRACKING BY RELIEVING THE STRESS CAUSED BY EXPANSION OF STUCCO.

EXPANDED CASING IS USED TO TERMINATE STUCCO OR PLASTER IN A CLEAN EDGE AROUND DOORS AND WINDOWS.



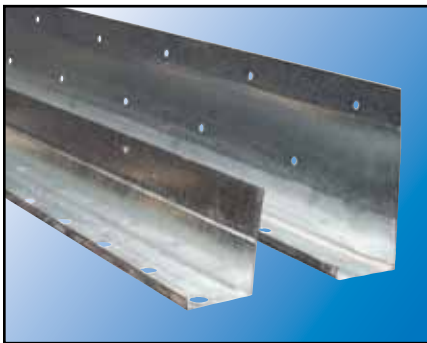
STUCCO



J-8 DRIP MOLD

SKU	DESCRIPTION	QUANTITY	PALLET DEPOSIT
080649	J-8 GROUND WITH HOLE - 7/8"	10 PCS./CASE	NONE

- GALVANIZED STEEL CASING USED TO TERMINATE STUCCO OR PLASTER IN A CLEAN, PROFESSIONAL EDGE AROUND DOORS AND WINDOWS
- MEETS ASTM C-1063



J METAL

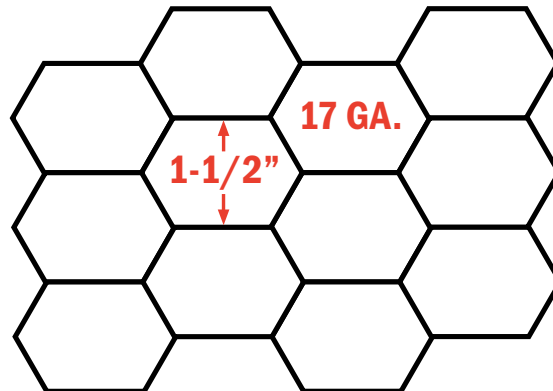
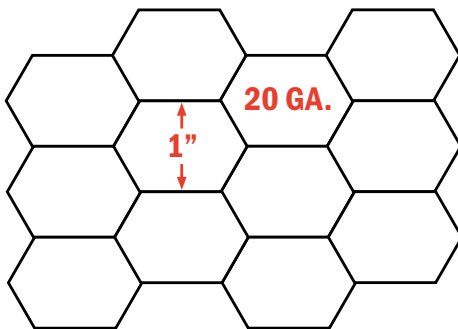
SKU	DESCRIPTION	QUANTITY	PALLET DEPOSIT
080651	SHORT LEG WITH HOLE - 1-3/8" X 10'	10 PCS./CASE	NONE
080654	LONG LEG WITH HOLE - 1-3/8" X 10'	10 PCS./CASE	NONE

- A GALVANIZED CASING BEAD USED IN CONJUNCTION WITH EXPANDED POLYSTYRENE (EPS) FOAM INSULATION BOARD WHEN THE FOAM BOARD IS INSTALLED UNDER THE STUCCO BASE COAT
- PROVIDES A WORKABLE SCREED AROUND DOORS AND WINDOWS

STUCCO NETTING ROLLS

SKU	DESCRIPTION	SIZE	QUANTITY	PALLET DEPOSIT
070796	1" x 20 GAUGE STUCCO NETTING	36" X 150'	32 ROLLS/PALLET	NONE
070806	1-1/2" x 17 GAUGE SELF FURRED	37.5" X 150'	18 ROLLS/PALLET	NONE
070812	1-1/2" x 17 GAUGE PAPERBACK	37.5" X 100'	18 ROLLS/PALLET	NONE

- ZINC COATED WOVEN WIRE FABRIC FOR USE AS REINFORCEMENT OF PORTLAND CEMENT STUCCO
- ASTM A-641



17 GAUGE WIRE



20 GAUGE WIRE



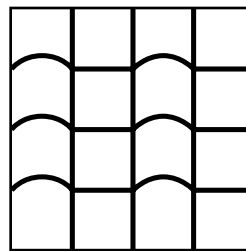
STUCCO

STRUCTALATH



SKU	DESCRIPTION	SIZE	PALLET QUANTITY	DEPOSIT
070804	1-1/2" x 17 GAUGE STRUCTALATH 48" ROLL	48" x 150'	32 ROLLS/PALLET	NONE

- **ZINC COATED WOVEN WIRE FABRIC FOR USE AS REINFORCEMENT OF PORTLAND CEMENT STUCCO**
- **ROLLS OUT FLAT FOR QUICK AND EASY INSTALLATION**
- **THE FURRS SPACE THE WIRE MESH AWAY FROM THE WALL TO ENSURE FULL EMBEDMENT OF THE WIRE IN THE SCRATCH COAT**
- **ICBO 5550**
- **LOS ANGELES RESEARCH REPORT 25421**

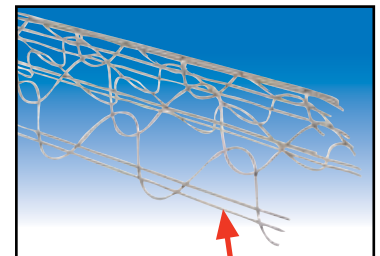


17 GAUGE WIRE



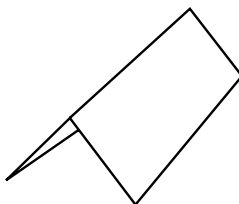
STUCCO CORNERS

SKU	DESCRIPTION	QUANTITY	PALLET DEPOSIT
0804WSW05	REGULAR STUCCO CORNER - 8'	40 PCS./CASE	NONE
0804WSW16	REGULAR STUCCO CORNER - 10'	40 PCS./CASE	NONE
0804WSW18	ONE COAT STUCCO CORNER - 10'	40 PCS./CASE	NONE
0804WSW30	SHORT FLANGE STUCCO CORNER - 10'	40 PCS./CASE	NONE
0804WSW45	FLEX ARCH STUCCO CORNER - 10'	40 PCS./CASE	NONE
0804WSW56	BULLNOSE STUCCO CORNER - 8'	40 PCS./CASE	NONE
0804WSW66	BULLNOSE STUCCO CORNER - 10'	40 PCS./CASE	NONE
0804WSW68	ONE COAT BULLNOSE STUCCO CORNER - 10'	40 PCS./CASE	NONE
0804WSW80	SHORT FLANGE BULLNOSE STUCCO CORNER - 10'	40 PCS./CASE	NONE
0804WSW95	FLEX BULLNOSE STUCCO CORNER - 10'	40 PCS./CASE	NONE



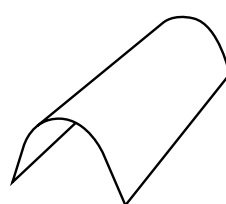
2 WIRES FOR EASY NAILING

- **PROTECTS STUCCO CORNERS AND PROVIDES A CLEAN, PROFESSIONAL EDGE**
- **CAN BE APPLIED WITH EITHER NAILS OR SCREWS**
- **CORNERS HAVE 2 NAILING WIRES FOR EASY INSTALLATION**
- **MEETS ASTM C-1063**
- **ONE COAT CORNERS WILL HAVE A 5 – 7 DEGREE WIDER ANGLE TO ENSURE PROPER EMBEDDING IN A ONE COAT STUCCO SYSTEM**



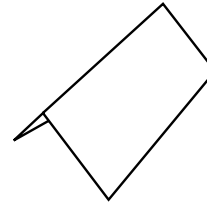
REGULAR CORNER

REGULAR STUCCO CORNERS PROVIDE A SHARP, PROFESSIONAL SQUARE CORNER WHILE HELPING TO PREVENT CRACKING.



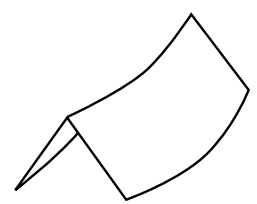
BULLNOSE CORNER

BULL NOSE CORNERS ARE THE IDEAL WIRE REINFORCEMENT TO ACHIEVE SMOOTH ROUND CORNERS.



SHORT FLANGE CORNER

SHORT FLANGE CORNERS ARE IDEAL FOR CREATING A CLEAN, SQUARE CORNER RETURN OR WHERE A STOP IS NEEDED.



FLEX ARCH CORNER

FLEX ARCH CORNERS ARE SPECIALLY DESIGNED TO BEND AROUND ARCHES, REINFORCING THE EDGES.

ORDER NOW! 1-800-325-6851

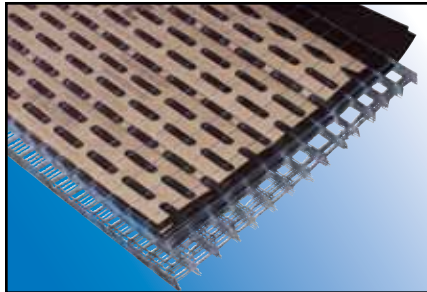
STUCCO



STUCCO STRIPING

SKU	DESCRIPTION	QUANTITY	PALLET DEPOSIT
0804WSW99	4" x 100' STUCCO STRIPING	120 ROLLS/PALLET	NONE

- ALL PURPOSE GALVANIZED STRIPING FOR PLASTER OR STUCCO REINFORCEMENT
- LAYS OUT FLAT FOR EASY INSTALLATION
- MEETS ASTM C-1063



WELDED-WIRE LATH SHEETS

SKU	DESCRIPTION	SHEET SIZE	BUNDLE QUANTITY	PALLET QUANTITY	PALLET DEPOSIT
070760	DOUBLE PLY	2.12 SQ. YDS./SHEET	12 SHEETS/BNDL.	20 BNDL./PAL.	NONE

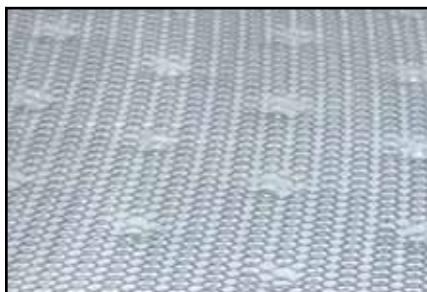
- ZINC COATED WELDED WIRE FABRIC FOR USE AS REINFORCEMENT OF PORTLAND CEMENT STUCCO
- CAN BE USED IN PLACE OF 3.4 METAL LATH
- COMPLIES WITH ANSI A42.3, C841, AND C933



EXPANDED LATH

SKU	DESCRIPTION	SHEET SIZE	BUNDLE QUANTITY	PALLET QUANTITY	PALLET DEPOSIT
070633	2.5 EXPANDED LATH - 8'	2 SQ. YDS./SHEET	10 SHEETS/BNDL.	50 BNDL./PAL.	NONE
070639	3.4 EXPANDED LATH - 8'	2 SQ. YDS./SHEET	10 SHEETS/BNDL.	50 BNDL./PAL.	NONE

- 2.5, 3.4 REFERS TO THE APPROXIMATE WEIGHT PER YARD OF PRODUCT
- EXPANDED METAL LATH FOR USE AS REINFORCEMENT OF PORTLAND CEMENT STUCCO
- MEETS ASTM 1063



DIMPLED/Self FURRED LATH

SKU	DESCRIPTION	SHEET SIZE	BUNDLE QUANTITY	PALLET QUANTITY	PALLET DEPOSIT
070628	2.5 DIMPLED LATH - 8'	2 SQ. YDS./SHEET	10 SHEETS/BNDL.	25 BNDL./PAL.	NONE
070646	3.4 DIMPLED LATH - 8'	2 SQ. YDS./SHEET	10 SHEETS/BNDL.	25 BNDL./PAL.	NONE

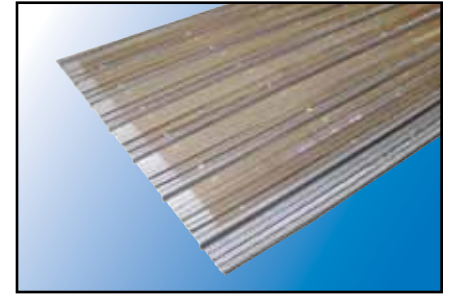
- EXPANDED METAL LATH FOR USE AS REINFORCEMENT OF PORTLAND CEMENT STUCCO
- PRE-DIMPLED TO IDEAL DEPTH FOR EMBEDDING IN STUCCO
- MEETS ASTM 1063

STUCCO

SPRAY RIB LATH

SKU	DESCRIPTION	SHEET SIZE	BUNDLE QUANTITY	PALLET QUANTITY	PALLET DEPOSIT
070664	3.4 3/8" SPRAY RIB - 8'	2 SQ. YDS./SHEET	10 SHEETS/BNDL.	50 BNDL./PAL.	NONE

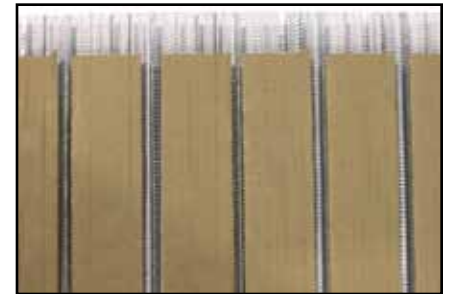
- **PAPER BACKED STUCCO LATH FOR USE WITH MACHINE APPLIED STUCCO**
- **KRAFT PAPER BACKING HELPS CONSERVE THE AMOUNT OF STUCCO THAT NEEDS TO BE APPLIED**
- **ASTM A653, A924 AND C847**



SPRAY FLAT RIB LATH

SKU	DESCRIPTION	SHEET SIZE	BUNDLE QUANTITY	PALLET QUANTITY	PALLET DEPOSIT
070635	2.75 SPRAY FLAT RIB - 4'	1 SQ. YDS./SHEET	10 SHEETS/BNDL.	50 BNDL./PAL.	NONE

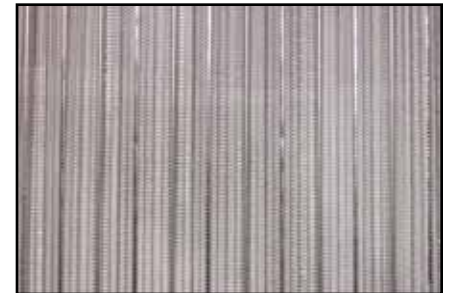
- **EXTRA RIGID STUCCO LATH WITH PAPER BACKING**
- **EXTRA RIGIDITY MAKES THIS PRODUCT WELL SUITED FOR HORIZONTAL APPLICATIONS SUCH AS SOFFITS**
- **ASTM A653, A924 AND C847**



HIGH RIB LATH

SKU	DESCRIPTION	SHEET SIZE	BUNDLE QUANTITY	PALLET QUANTITY	PALLET DEPOSIT
070657	3.4 3/8" HIGH RIB LATH - 8'	2 SQ. YDS./SHEET	10 SHEETS/BNDL.	50 BNDL./PAL.	NONE

- **SPECIALLY DESIGNED LATH FOR HORIZONTAL APPLICATIONS LIKE CEILINGS AND SOFFITS**
- **ASTM C847**



STUCCO

FURRING NAILS

1-1/2" WITH WAD

SKU	DESCRIPTION	QUANTITY	PALLET DEPOSIT
064234	1-1/2" x 3/8" NAILS - 400 PCS. (2 LBS.)	8 BOXES/CASE	NONE
062557	1-1/2" x 3/8" NAILS - 28 LBS.	48 BOXES/PALLET	NONE

1-3/4" WITH WAD

SKU	DESCRIPTION	PALLET QUANTITY	DEPOSIT
064240	1-3/4" x 3/8" NAILS - 400 PCS. (2 LBS.)	8 BOXES/CASE	NONE

1-1/2" NO WAD

SKU	DESCRIPTION	QUANTITY	PALLET DEPOSIT
062558	1-1/2" x 3/8" WITHOUT WAD - 50LBS.	48 BOXES/PALLET	NONE



- USED FOR SUPPORTING AND SPACING WIRE LATH/STUCCO NETTING ON A WALL
- PAPER WAD SPACES THE STUCCO NETTING FROM THE WALL SO IT WILL BE PROPERLY EMBEDDED IN THE STUCCO BASECOAT

STONE WIRE

SKU	DESCRIPTION	QUANTITY	PALLET DEPOSIT
070703	18 GA. GALVANIZED STONE WIRE	8 COILS/BNDL.	NONE

- STONE WIRE IS USED WITH THE REINFORCING MESH WHEN THE HOUSE IS BEING PREPARED FOR THE STUCCO BASECOAT
- STONE WIRE IS WRAPPED AROUND THE HOUSE IN HORIZONTAL LINES
- STONE WIRE COMES IN A 100 LB. BUNDLE MADE UP OF EIGHT 12.5 LB. SUB BUNDLES CALLED "STONES"



STUCCO

TYPE II CEMENT (ALSO CALLED PORTLAND, COMMON, OR REGULAR CEMENT)

SKU	DESCRIPTION	QUANTITY	PALLET DEPOSIT
090375	TYPE I-II CEMENT - 94 LBS.	35/PALLET	\$5.00
090381	TYPE I-II CEMENT - 47 LBS.	70/PALLET	\$10.00

- **PORTLAND CEMENT IS THE BINDER THAT MIXES WITH SAND TO CREATE A STUCCO/MORTAR BASECOAT MIX**
- **TYPICALLY AN ADDITIVE SUCH AS LIME WILL ALSO BE MIXED IN TO HELP WITH THE WORKABILITY OF THE STUCCO/MORTAR BASECOAT**
- **CONFORMS TO ASTM C-150**
- **MEETS TYPE V REQUIREMENTS FOR LOW ALKALI**
- **USUALLY MIXED IN A RATIO SIMILAR TO: 1 PART CEMENT, 3 - 4 PARTS SAND**



PLASTIC CEMENT

SKU	DESCRIPTION	QUANTITY	PALLET DEPOSIT
090384	PLASTIC CEMENT - 94 LBS.	35/PALLET	\$5.00

- **PLASTIC CEMENT IS THE BINDER THAT MIXES WITH SAND TO CREATE A STUCCO/MORTAR BASECOAT MIX**
- **THIS CEMENT IS USED TO REPLACE TYPE II CEMENT IN A STUCCO APPLICATION**
- **PLASTIC CEMENT HAS "PLASTICITY" OR "WORKABILITY"**
- **PLASTIC CEMENT IN A STUCCO/MORTAR BASECOAT WILL WORK WITHOUT ADDING LIME FOR WORKABILITY**
- **MEETS U.B.C. STANDARD 47-1 FOR USE IN PLASTERING**
- **USUALLY MIXED IN A RATIO SIMILAR TO: 1 PART CEMENT, 3 - 4 PARTS SAND**



TYPE S LIME

SKU	DESCRIPTION	QUANTITY	PALLET DEPOSIT
120387	CHEMSTAR TYPE S LIME - 50 LBS.	55/PALLET	\$12.00

- **ADDING LIME TO A PORTLAND CEMENT AND SAND STUCCO BASECOAT MIX MAKES THE MIXTURE THICKER AND MORE STICKY WHEN WET**
- **LIME IS ALSO ADDED TO HELP WITH THE WORKABILITY MAKING IT EASIER FOR THE PLASTERER**
- **MEETS ASTM C-206 AND C-207**
- **MEETS U.B.C. STANDARD 21-13**
- **MEETS I.B.C. STANDARD 2000, 2103.7**
- **USUALLY MIXED IN A RATIO SIMILAR TO: 2 PARTS PORTLAND CEMENT, 1 PART LIME, 6 PARTS SAND**



STUCCO

WASHED SAND



SKU	DESCRIPTION	SIZE	QUANTITY	PALLET DEPOSIT
090433	WASHED SAND	3/4 CU. FT. BAG	40 BAGS/PALLET	\$10.00

- USUALLY BLENDED WITH CEMENT TO MAKE A STUCCO BASECOAT MIX
- WASHED SAND COMES FROM RIVER BEDS AND SCREENED TO REMOVE LARGE DEBRIS
- WASHED SAND WILL HAVE A MIX OF COARSE AND FINE GRAINS IN IT
- WASHED SAND IS BAGGED DAMP
- MEETS ASTM C-144

SILICA IS SEPARATED AND GRADED INTO DIFFERENT SIZES. CALIFORNIA SILICA IS SIZED OVER SCREENS WITH HOLES IN THEM. A #16 SCREEN HAS 16 HOLES PER INCH, WHEREAS A #30 SCREEN HAS 30 HOLES PER INCH, SO A #30 SAND IS MUCH SMALLER THAN A #16 SAND.



SILICA SAND

SKU	DESCRIPTION	QUANTITY	PALLET DEPOSIT
090448	CAL SILICA #16 SILICA SAND - 100 LBS.	30 BAGS/PALLET	\$10.00
090451	CAL SILICA #20 SILICA SAND - 100 LBS.	30 BAGS/PALLET	\$10.00
090454	CAL SILICA #30 SILICA SAND - 100 LBS.	30 BAGS/PALLET	\$10.00
090457	CAL SILICA #60 SILICA SAND - 100 LBS.	30 BAGS/PALLET	\$10.00
090458	CAL SILICA #90 SILICA SAND - 100 LBS.	30 BAGS/PALLET	\$10.00



- CLEAN AND SCREENED
- GRADED TO SIZE
- KILN DRIED
- #16, #20, AND #30 CAN BE USED IN SANDBLASTING - ARB#: G-05-065
- CAN BE MIXED WITH CEMENT FOR A VERY CLEAN MORTAR MIX

STUCCO

SPEEDI-PATCH

SKU	DESCRIPTION	QUANTITY	PALLET DEPOSIT
120409	EXTERIOR - 50 LBS. BAG	50 BAGS/PALLET	\$10.00

- **MISSION EXTERIOR STUCCO PATCH IS A COMPLETE ONE COAT FINISH MATERIAL DESIGNED FOR PATCHING OUTSIDE**
- **REPLACES BOTH THE SCRATCH AND BROWN COATS IN ONE APPLICATION**
- **CAN BE TEXTURED TO MATCH EXISTING STUCCO**
- **COVERS 2 SQ. YDS. AT 1/2" THICKNESS PER 50 LB. BAG**



PERLITE

SKU	DESCRIPTION	QUANTITY	PALLET DEPOSIT
120427	PERLITE - 3 CU. FT. BAG	50 BAGS/PALLET	\$15.00

- **AN EXPANDED PERLITE AGGREGATE THAT CAN BE USED IN A LIGHT-WEIGHT PLASTER**
- **MEETS ASTM C-332, GROUP 1**



STUCCO

FOAM MAGIC



SKU	DESCRIPTION	SIZE	QUANTITY	PALLET DEPOSIT
120533	FOAM MAGIC #20 GRAY	50 LBS.	56 BAGS/PALLET	NONE
120534	FOAM MAGIC #30 GRAY	50 LBS.	56 BAGS/PALLET	NONE

- ONE 50 LB. BAG COVERS APPROXIMATELY 40 – 60 SQ. FT.
- COATING MATERIAL FOR EPS ARCHITECTURAL FOAM SHAPES
- MADE WITH LIGHT COLORED CEMENT TO ACCEPT COLOR UNIFORMLY

- EASY TO USE – JUST ADD WATER!
- HAND OR MACHINE APPLICATION
- COATS AND BONDS

MIXING INSTRUCTIONS

1. Each 50-pound bag will generally require 1 to 1-1/2 gallons of clean water depending on the application.
2. It is recommended that a mechanical mixing device be used.
3. Start with 3/4 to 1 gallon clean water.
4. Add bag of foam coat and mix until material is thoroughly saturated.
5. Add the balance of the required water and mix for 5 minutes; be sure that the product is thoroughly mixed.
6. Let the blended material sit for 5 minutes, then remix to break the set before any application.

SURFACE COATING

Foam Magic should be applied with a coating of 3/16" to 1/4" thick to the foam shapes, and can be applied either by a machine or by hand.



ADHESIVE MESH

SKU	DESCRIPTION	QUANTITY	PALLET DEPOSIT
020718	12" X 150' ROLL	18 ROLLS/CASE	NONE
020719.5	36" X 150' ROLL	6 ROLLS/CASE	NONE

- REINFORCES AND STRENGTHENS EPS ARCHITECTURAL FOAM SHAPES PRIOR TO COATING
- WHITE WOVEN FABRIC IS ALKALI RESISTANT AND DESIGNED TO WORK IN CEMENTITIOUS APPLICATIONS

STUCCO

STUCCO BASE

SKU	DESCRIPTION	SIZE	QUANTITY	PALLET DEPOSIT
122103	STUCCO BASE 16/20 - WHITE	90 LBS.	35 BAGS/PALLET	NONE
122104	STUCCO BASE 20/30 - WHITE	90 LBS.	35 BAGS/PALLET	NONE
122105	STUCCO BASE 30/60 - WHITE	90 LBS.	35 BAGS/PALLET	NONE
122113	STUCCO BASE 16/20 - GRAY	90 LBS.	35 BAGS/PALLET	NONE
122114	STUCCO BASE 20/30 - GRAY	90 LBS.	35 BAGS/PALLET	NONE
122115	STUCCO BASE 30/60 - GRAY	90 LBS.	35 BAGS/PALLET	NONE

- **CAL DORADO STUCCO IS A DECORATIVE FINISH MATERIAL FOR USE OVER PORTLAND CEMENT BASE COATS**
- **COVERS APPROXIMATELY 15 - 20 SQ. YD. PER 90 LB. BAG**
- **HAND OR MACHINE APPLICATION**
- **MEETS ASTM 1063**



FOAM COAT

SKU	DESCRIPTION	SIZE	QUANTITY	PALLET DEPOSIT
122122	FOAM COAT #20 - WHITE	50 LBS.	56 BAGS/PALLET	NONE
122123	FOAM COAT #30 - WHITE	50 LBS.	56 BAGS/PALLET	NONE
122126	FOAM COAT #20 - GRAY	50 LBS.	56 BAGS/PALLET	NONE
122127	FOAM COAT #30 - GRAY	50 LBS.	56 BAGS/PALLET	NONE

- **COATING MATERIAL FOR EPS ARCHITECTURAL FOAM SHAPES**
- **EASY TO USE - JUST ADD WATER!**
- **HAND OR MACHINE APPLICATION**
- **COATS AND BONDS**
- **COVERS APPROX. 40 - 60 SQ. FT. PER 50 LBS. BAG**



STUCCO BONDER

SKU	DESCRIPTION	SIZE	QUANTITY	PALLET DEPOSIT
122130	STUCCO BONDER	1 GAL.	4 BOTTLES/CASE	NONE

- **VERSATILE ACRYLIC BONDER FORMULATED TO BOND CEMENTITIOUS PRODUCTS TO PRE-EXISTING BASE COATS**
- **INCREASES BOND STRENGTH WHEN USED AS AN ADMIX**
- **COVERS APPROX. 100 - 300 SQ. FT. PER GALLON DEPENDING ON APPLICATION METHOD**



FOR USE AS A SURFACE BONDER:

1. APPLY A THIN COAT OF STUCCO BONDER ONTO THE TARGET SURFACE USING A BRUSH, ROLLER, OR SPRAYER.
2. ONCE THE STUCCO BONDER BECOMES TACKY, APPLY THE NEW COAT OF STUCCO OVER THE BASE COAT AND TEXTURE TO DESIRED FINISH.

FOR USE AS AN ADMIXTURE:

1. ADD 1-2 QUARTS (.95-1.89 L) OF STUCCO BONDER TO 3 GALLONS (11.36 L) OF CLEAN WATER.
2. COMBINE THE WATER/BONDER MIXTURE WITH A BAG OF CAL DORADO STUCCO BASE AND MIX WITH A MECHANICAL MIXING TOOL UNTIL THE MIXURE IS SMOOTH AND FREE OF LUMPS.
3. ADD 1 CAL DORADO COLOR PACK PER 90 LB. BAG OF STUCCO BASE AND CONTINUE TO MIX FOR 15 MINUTES.
4. LET STAND FOR 5-10 MINUTES, THEN STIR AGAIN AND USE.

ORDER NOW! 1-800-325-6851

STUCCO

COLOR PACKS



SKU	DESCRIPTION	SIZE	QUANTITY	PALLET DEPOSIT
122011	W-11 CREAM	1 LB.	30 BOXES/CASE	NONE
122013	G-13 LUNA	1 LB.	30 BOXES/CASE	NONE
122015	G-15 SIERRA	1 LB.	30 BOXES/CASE	NONE
122017	G-17 INCA	1 LB.	30 BOXES/CASE	NONE
122019	G-19 LA BREA	1 LB.	30 BOXES/CASE	NONE
122021	G-21 ARROYO	1 LB.	30 BOXES/CASE	NONE
122023	G-23 PLAYA	1 LB.	30 BOXES/CASE	NONE
122025	G-25 MISSION	1 LB.	30 BOXES/CASE	NONE
122027	G-27 LAGO	1 LB.	30 BOXES/CASE	NONE
122029	G-29 MESA	1 LB.	30 BOXES/CASE	NONE
122031	G-31 BAJA	1 LB.	30 BOXES/CASE	NONE
122033	G-33 AZTECA	1 LB.	30 BOXES/CASE	NONE
122035	G-35 MISTIQUE	1 LB.	30 BOXES/CASE	NONE
122037	G-37 MAYA	1 LB.	30 BOXES/CASE	NONE
122039	W-39 MAZATLAN	2 LB.	15 BOXES/CASE	NONE
122041	G-41 FRONTIER	1 LB.	30 BOXES/CASE	NONE
122043	G-43 RANCHO	1 LB.	30 BOXES/CASE	NONE
122045	W-45 ACAPULCO	1 LB.	30 BOXES/CASE	NONE
122047	W-47 DULCE	1 LB.	30 BOXES/CASE	NONE
122049	W-49 ROSA	1 LB.	30 BOXES/CASE	NONE
122051	G-51 LEGEND	1 LB.	30 BOXES/CASE	NONE
122053	G-53 DESERT	1 LB.	30 BOXES/CASE	NONE
122055	G-55 ENSENADA	1 LB.	30 BOXES/CASE	NONE
122057	G-57 MOJAVE	1 LB.	30 BOXES/CASE	NONE
122059	G-59 HACIENDA	2 LB.	15 BOXES/CASE	NONE
122061	G-61 CASTILLO	1 LB.	30 BOXES/CASE	NONE
122063	W-63 PUEBLO	1 LB.	30 BOXES/CASE	NONE
122065	W-65 DEL SOL	1 LB.	30 BOXES/CASE	NONE
122067	G-67 ADOBE	1 LB.	30 BOXES/CASE	NONE
122069	W-69 BLANCO	1 LB.	30 BOXES/CASE	NONE

- **CAL DORADO COLOR PACKS ARE CONCENTRATED PIGMENTS FOR USE WITH CAL CORADO STUCCO BASE.**
- **EACH COLOR PACK WILL COLOR ONE 90 LB. (40.82 KG) BAG OF STUCCO BASE**
- **30 COLORS TO CHOOSE FROM!**
- **THE "G" OR "W" IN THE NAME REFERS TO THE COLOR OF BASE TO USE WITH IT**
- **"G" IS FOR GRAY, "W" IS FOR WHITE**

MIXING:

1. COMBINE 3 GALLONS (11.36 L) OF CLEAN WATER PER BAG OF STUCCO BASE MIX WITH A MECHANICAL MIXING TOOL UNTIL THE MIXTURE IS SMOOTH AND FREE OF LUMPS.
2. ADD 1 COLOR PACK PER 90 LB. BAG OF CAL DORADO STUCCO BASE AND CONTINUE MIXING FOR 15 MINUTES.
3. LET STAND FOR 5-10 MINUTES, THEN STIR AGAIN AND USE.
4. ADD ONLY ENOUGH ADDITIONAL WATER NECESSARY TO BRING THE STUCCO TO A WORKABLE CONSISTENCY.

STUCCO

PATCH KIT

SKU	DESCRIPTION	SIZE	PALLET DEPOSIT
122201	W-11 CREAM	10 LBS.	NONE
122202	G-13 LUNA	10 LBS.	NONE
122203	G-15 SIERRA	10 LBS.	NONE
122204	G-17 INCA	10 LBS.	NONE
122205	G-19 LA BREA	10 LBS.	NONE
122206	G-21 ARROYO	10 LBS.	NONE
122207	G-23 PLAYA	10 LBS.	NONE
122208	G-25 MISSION	10 LBS.	NONE
122209	G-27 LAGO	10 LBS.	NONE
122210	G-29 MESA	10 LBS.	NONE
122211	G-31 BAJA	10 LBS.	NONE
122212	G-33 AZTECA	10 LBS.	NONE
122213	G-35 MISTIQUE	10 LBS.	NONE
122214	G-37 MAYA	10 LBS.	NONE
122215	W-39 MAZATLAN	10 LBS.	NONE
122216	G-41 FRONTIER	10 LBS.	NONE
122217	G-43 RANCHO	10 LBS.	NONE
122218	W-45 ACAPULCO	10 LBS.	NONE
122219	W-47 DULCE	10 LBS.	NONE
122220	W-49 ROSA	10 LBS.	NONE
122221	G-51 LEGEND	10 LBS.	NONE
122222	G-53 DESERT	10 LBS.	NONE
122223	G-55 ENSENADA	10 LBS.	NONE
122224	G-57 MOJAVE	10 LBS.	NONE
122225	G-59 HACIENDA	10 LBS.	NONE
122226	G-61 CASTILLO	10 LBS.	NONE
122227	W-63 PUEBLO	10 LBS.	NONE
122228	W-65 DEL SOL	10 LBS.	NONE
122229	G-67 ADOBE	10 LBS.	NONE
122230	W-69 BLANCO	10 LBS.	NONE



- **CAL DORADO STUCCO PATCH IS A PORTLAND CEMENT BASED PATCHING MATERIAL FOR THE MAINTENANCE OF STUCCO FINISHES**
- **COVERAGE WILL VARY DEPENDING ON APPLICATION METHOD**
- **COVERS APPROXIMATELY 3 – 4 SQ. FT. PER 10 LB. PAIL**
- **PREBLENDED TO MATCH ALL 30 CAL DORADO COLORS**

MIXING:

1. COMBINE 1/3 GALLON (1.26 L) OF CLEAN WATER PER PAIL OF CAL DORADO STUCCO PATCH AND MIX FOR 3 MINUTES.
3. LET STAND FOR 5 MINUTES, THEN STIR AGAIN AND USE.
4. ADD ONLY ENOUGH ADDITIONAL WATER NECESSARY TO BRING THE STUCCO PATCH TO A WORKABLE CONSISTENCY.

APPLICATION:

FLOAT OR SPRAY CAL DORADO STUCCO PATCH INTO PLACE AND TEXTURE TO DESIRED FINISH. IN EXCESSIVELY HOT OR DRY CONDITIONS, A LIGHT SPRAY OF CLEAN WATER IS RECOMMENDED OVER THE PATCH TO PREVENT CRACKING.

ORDER NOW! 1-800-325-6851

STUCCO

FOG COAT



SKU	DESCRIPTION	SIZE	PALLET DEPOSIT
122233	W-11 CREAM	25 LBS.	NONE
122234	G-13 LUNA	25 LBS.	NONE
122235	G-15 SIERRA	25 LBS.	NONE
122236	G-17 INCA	25 LBS.	NONE
122237	G-19 LA BREA	25 LBS.	NONE
122238	G-21 ARROYO	25 LBS.	NONE
122239	G-23 PLAYA	25 LBS.	NONE
122240	G-25 MISSION	25 LBS.	NONE
122241	G-27 LAGO	25 LBS.	NONE
122242	G-29 MESA	25 LBS.	NONE
122243	G-31 BAJA	25 LBS.	NONE
122244	G-33 AZTECA	25 LBS.	NONE
122245	G-35 MISTIQUE	25 LBS.	NONE
122246	G-37 MAYA	25 LBS.	NONE
122247	W-39 MAZATLAN	25 LBS.	NONE
122248	G-41 FRONTIER	25 LBS.	NONE
122249	G-43 RANCHO	25 LBS.	NONE
122250	W-45 ACAPULCO	25 LBS.	NONE
122251	W-47 DULCE	25 LBS.	NONE
122252	W-49 ROSA	25 LBS.	NONE
122253	G-51 LEGEND	25 LBS.	NONE
122254	G-53 DESERT	25 LBS.	NONE
122255	G-55 ENSENADA	25 LBS.	NONE
122256	G-57 MOJAVE	25 LBS.	NONE
122257	G-59 HACIENDA	25 LBS.	NONE
122258	G-61 CASTILLO	25 LBS.	NONE
122259	W-63 PUEBLO	25 LBS.	NONE
122260	W-65 DEL SOL	25 LBS.	NONE
122261	G-67 ADOBE	25 LBS.	NONE
122262	W-69 BLANCO	25 LBS.	NONE

- CAL DORADO FOG COAT IS A PIGMENTED CEMENT COATING TO ACHIEVE COLOR UNIFORMITY AND HELP MAINTAIN STUCCO FINISHES
- COVERAGE WILL VARY DEPENDING ON APPLICATION METHOD
- COVERS APPROXIMATELY 1000 – 2000 SQ. FT. PER 25 LB. PAIL
- PREBLENDED TO MATCH ALL 30 CAL DORADO COLORS

MIXING:

1. COMBINE 5 QUARTS (4.73 L) OF CLEAN WATER PER PAIL OF CAL DORADO FOG COAT AND MIX WITH A MECHANICAL MIXING DEVICE UNTIL THE MIXTURE IS SMOOTH AND FREE OF LUMPS.
3. LET STAND FOR 5 MINUTES, THEN STIR AGAIN AND USE.
4. ADD ONLY ENOUGH ADDITIONAL WATER NECESSARY TO BRING THE MIXTURE TO A SLURRY-LIKE CONSISTENCY.

APPLICATION:

BRUSH APPLICATION: USING A PAINT BRUSH, APPLY FOG COAT TO THE TARGET SURFACE, FEATHERING THE EDGES TO BLEND THE MATERIAL WITH THE EXISTING COLOR. AVOID POOLING AND RUNS.

SPRAY APPLICATION: USING A PRESSURE TANK STYLE SPRAYER, SPRAY THE TARGET SURFACE WITH LIGHT COATS OF THE FOG COAT. MULTIPLE LIGHT COATS WILL PRODUCE BETTER RESULTS THAN ONE HEAVY COAT. ALLOW APPROXIMATELY 15 MINUTES DRYING TIME BETWEEN COATS. AVOID POOLING AND RUNS.